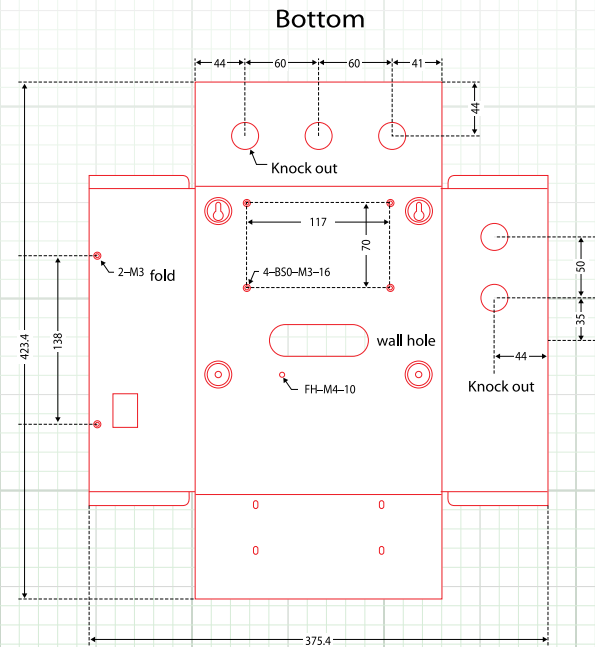
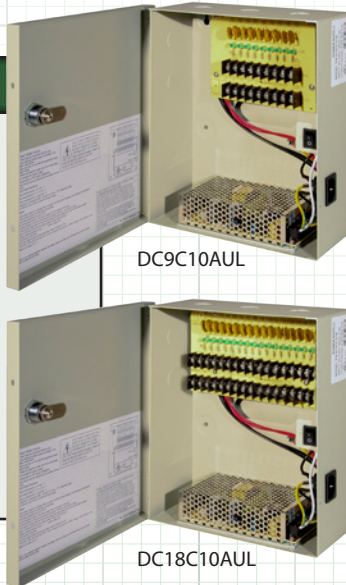


9 & 18 Channel 12 Volt DC Multi-Channel Power Supplies with PTC Fuse

FEATURES

- ◆ 10 Amp Total Output
- ◆ 1.1 Amp/Channel (9 Channel)
- ◆ 560mA/Channel (18 Channel)
- ◆ PTC Resettable Fuse Protection
- ◆ LED Channel Indicator
- ◆ Key & Lock Assembly Included
- ◆ EZ Connect 3-Prong Power Cord
- ◆ UL/CUL Certifications

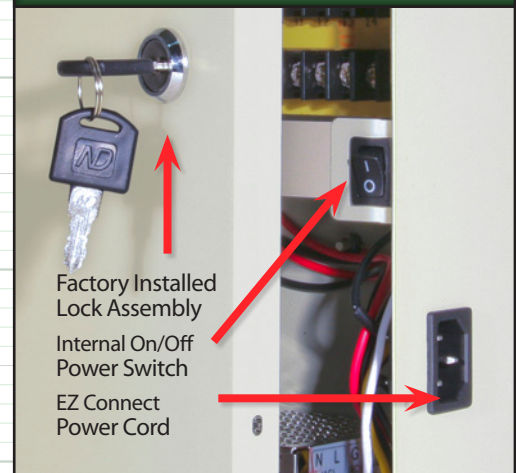


SPECIFICATION	DC9C10AUL	DC18C10AUL
Number of Outputs	9	18
Input Voltage	AC120V, 60HZ, 2.5A	
Output Voltage	12 Volt DC	
Potentiometer	Yes - (Range of 10VDC ~ 14VDC)	
Total Output Current	10 Amp	
Output Current per Channel	1.12 Amp	560mA
Output Fuse Protection	PTC Resettable Fuses	
Maximum Fuse Rating	1.6 Amp	1.1 Amp
Channel LED Indicator	Yes	
Protections	Over Power, Over Current, Over Voltage, Short Circuit	
Internal On/Off Switch	Yes	
Power Cord	Easy Connect / 3-Prong	
Key / Lock Assembly	Included	
Housing Dimensions (H x W x D)	10.1" x 8.3" x 3.6"	
Housing Material / Color	Steel / Beige	
Housing Knockouts - 1/2"	3 Top / 2 Left Side	
Certification	UL/CUL, FCC, CE, ROHS	
Operating Temperature	14°F ~ 104°F	
Weatherproof Rating	Indoor Only	

INCLUDED ACCESSORIES

- 3-Prong Power Cord
- Keys x2
- Mounting Template
- Mounting Screws x4
- Knockout Grommets x3
- Door Screws x2

PRODUCT DETAIL



Note: Specification subject to change without notice